

Cyscurl Rich's technical process



Happiness of Creation,,, Permanent Revolution Begins

CR

CYSCURL RICH
Most enjoy for the Happiness

CYSCURL RICH



Tamaris.co.Ltd. (Address)

- 東京センター 〒604-8263 京都府京都市東山区東福川通三条上ル 電話(075)255-1800
 - 東京支店 〒165-0027 東京都中野区野方 1-37-1 電話(03)5343-3141
 - 仙台営業所 〒980-0801 仙台市青葉区本町通 2丁目6番51号北六フレッツ1F 電話(022)301-5051
 - 大阪支店 〒550-0002 大阪市西区江戸堀 1-18-12 タマリスビル 2F 電話(06)6441-3901
 - 名古屋営業所 〒460-0007 名古屋市中区新栄 2丁目1番9号豊電プレックスビル高層 7F706号 電話(052)264-4602
 - 広島営業所 〒730-0847 広島市中区月入南 3丁目18-14 電話(082)532-0634
 - 九州営業所 〒810-0073 福岡市中央区舞鶴 1丁目2番25号 電話(092)751-8860
- www.tamaris.co.jp

タマリス代用品

TAMARIS

“The first company developed Cysteine permanent all over the world.”

In 1974, Tamaris was success to develop “cysteine permanent” on Beauty industry.

“Cyscurl” evolved to fit as each time period wanted.

In these days, all customers respected to receive “High quality” technical skill and technology at saloon.

From customers’ great varieties of hairstyles and damaged hair care,

“Cyscurl Rich” is the answer what we found in this time period.

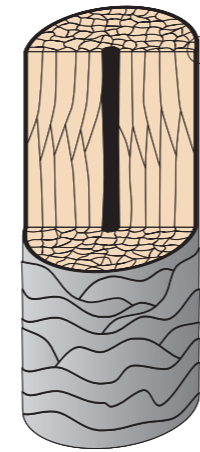
“Cyscurl Rich” will make customers and salon need come true.

Beauty of material and Curvaceous

Cyscurl Rich

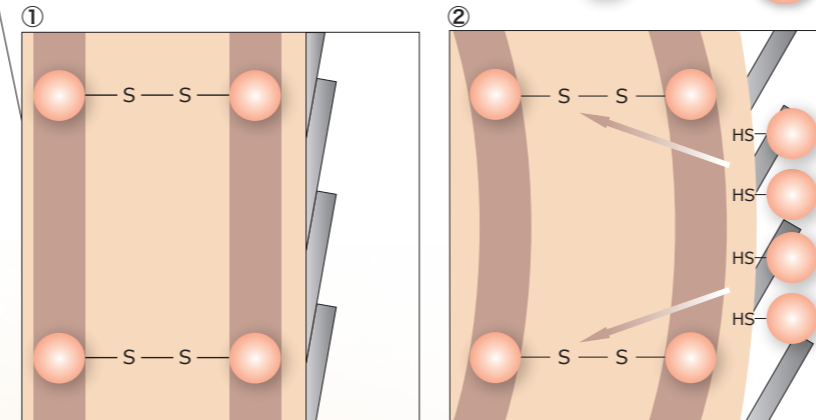
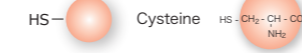
“Cyscurl Rich gives you soft hair touch and solid shape also, it keeps rich permanent style.”

1 The main ingredients is cysteine

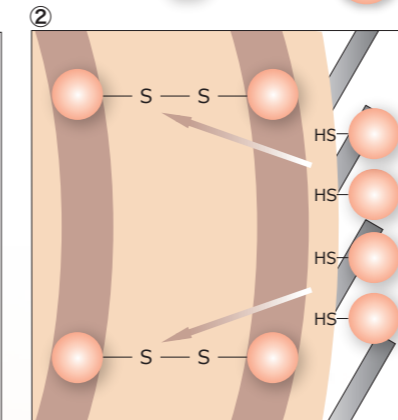


Because of these, the feel of hair touch is different.

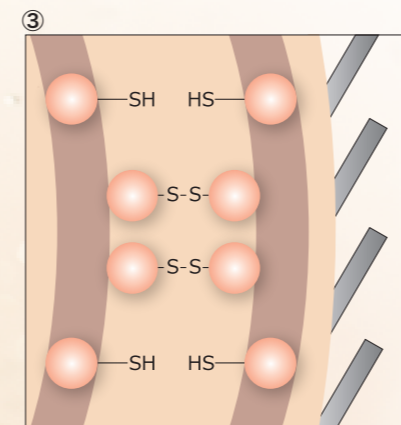
Cysteine which is natural ingredient is main ingredient of “Cyscurl Rich.” Cysteine is a type of amino acid which is the component of keratin. Our hair and nails are made from protein. The keratin is the component of protein. Keratin is strong and tough protein and it protects our body. Cysteine is the most important ingredient of making keratin’s strength and toughness. When cysteine effect to make wave shape, it unify inside of the hair, cysteine works as treatment and also, it makes excellent elastic wavy shape all part of hair, although, the hair is damaged. In addition, cysteine is low swelling material for that it effects gently and keeps hair elastic.



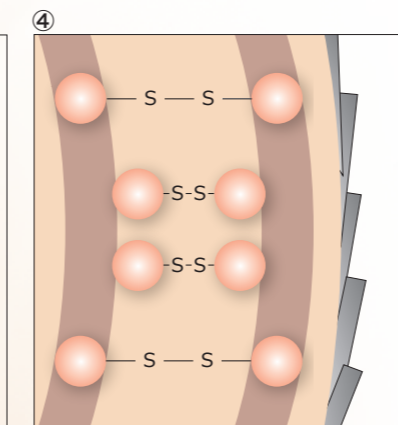
SS-bond (disulfide-bond) has stayed in hair high percentage and it related to the strength of the hair.



When cysteine unify inside hair, it start effecting hair SS-bond. (When first medicine apply)



Cyscurl Rich’s cysteine reduce one’s hair SS-bond to hair cysteine. also, Cyscurl Rich’s cysteine will be oxidized itself and its turn to be cysteine. These action will happen same time.



From 2nd medicine’s oxidative effect, SS-bond will regenerate inside of hair. Also, cysteine which made from cyscurl rich’s will stay in them.

[Image diagram]

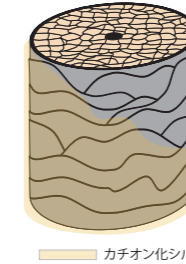
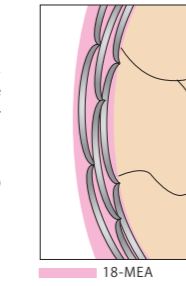
2 5 components of supporting softness

18-MEA

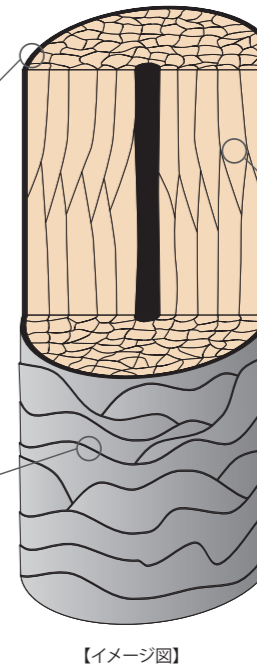
(18-Methylicosanoic acid)
18-MEA is one of the important components of hair cell membrane complex (CMC) which exist in hair cuticle.
•When hair get damaged, hair hydrophobicity level will drop. To add 18-MEA, increase damaged hair’s hydrophobicity level and keep hair’s softness & smooth touch.

Cationized silk PPT

Molecular weight : 1,200
•To Cationize silk PPT, silk PPT easy to absorb hair. When it absorb to hair, hair touch will be silky and hair gets more pliable.



カチオン化シルクPPT



【イメージ図】

Betain

Betain which is natural moisturizing amino acid, contained in such as sugar beet, mushroom, and fruit.
•It keeps moistness healthy hair and gives pliable touch.

8 different types of Amino Acid

Glycine, Alanine, Proline, Serine, Threonine, Arginine, Lysine, Glutamic Acid

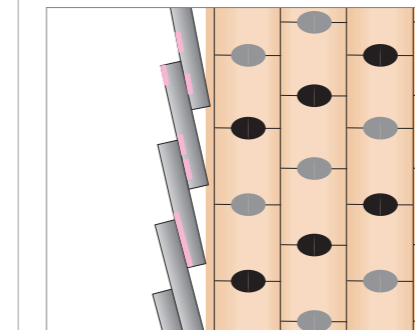
Plant (wheat) PPT

Molecular weight : 700
It has strong affinity with hair and it has volume of acidic amino acid which is great moisturizing agent.
•It protects and repair hair damaged part and also, keeps hair healthy.

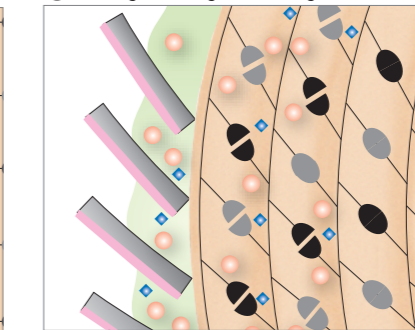
3 Creeping system: To design solid shape and to keep permanent

From Cysteine’s soft reaction and original alkali control, realize low swelling and also, 18-MEA controls dryness hair. From these effects, we realize creeping system by keeping hair softness and smooth touch.

Hair before treatment

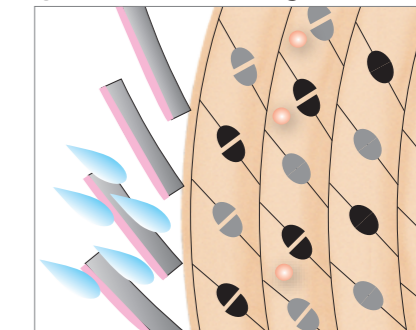


① Winding + heating after adding first medicine

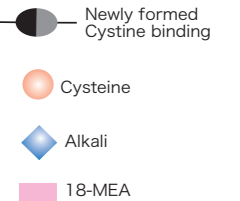


Cysteine infiltrate inside of hair and it breaks SS-bond.

② Intermediate rinsing

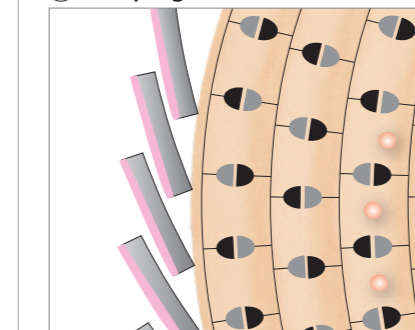


After test curl, rinse well added medicine from the hair.



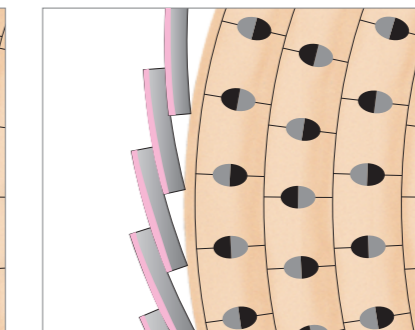
[Image diagram]

③ Creeping



During creeping, because of medicine effect, deoxidization and oxidation same time in the depths of hair.

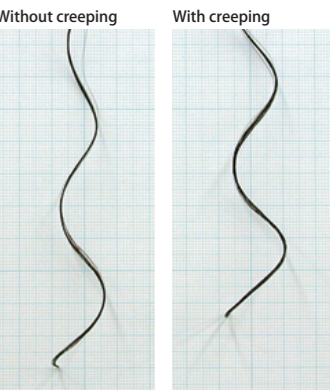
④ Adding second medicine



*Generally, Creeping is leaving definite period of time between intermediate rinsing and adding second medicine.

What is the Cyscurl Rich’s creeping system?

This system makes cysteine permanent’s original soft but pliable touch and ridged wave. After rinsing first medicine, by the reheating, cysteine infiltrate inside hair and it breaks SS-bond. Also, cysteine turns to be cystine and it works as inside treatment and around surface of hair, it will prepare to effect as deoxidize. From these effects, Cyscurl Rich will make ridged wave permanent which traditional permanent medicine can’t actualize.



Shape of wave after drying