

5 Weeks Protection Layer By Salon Professional Operation: Choose from 3 types of your wishing hair texture

FOR PROFESSIONAL

FOR HOME CARE

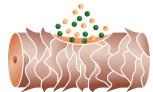
Repairing Hair damage with smoothness

Repairing Hair damage with smoothing finesse

Repairing Color & Heat damaged Hair with Smoothing finesse



Pre-Repairing: Replenishing



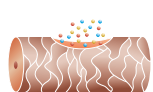
- Diglucoyl Gallic Acid: Polyphenol Derivative
- Tryptophan: Amino Acid

HAIR RESCUE PLATINUM 0 effect strongly to Color & Heat damaged Hair

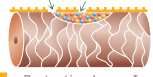
This is the new item for High Color & Heat damaged Hair Especially damaged with Hair Dye or High Heated Iron who wish to repair one's hair condition

※Operate and following steps with HAIR RESCUE PLATINUM 1,2,3 Diglucoyl Gallic Acid permeates and stays to Cortex hollow, gives hair softness Tryptophan permeates and stays to Cortex hollow which disappearing by intensive heating operation

Repairing



- 9 different types of Amino Acid
- Glycosphingolipids
- Sodium Acetylated Hyaluronate



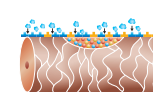
Protective Layer I

Using properly as aiming Texture on Step 1

Repairing component will permeates and repairs Cortex hollow Protective layer covered surface of hair uniformly and strongly

※Sodium Acetylated Hyaluronate has Water-holding capacity twice as much as Hyaluronis Acid

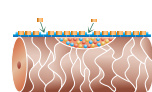
Permeating



- Protective Layer I
- Protective Layer II

Protective layer II unite Protective Layer I provide strong protection base and protect ingredient spillage from Cortex

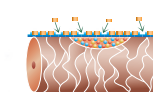
Fixation



- Protective Layer I, II
- Protect Layer III

Protect Layer III well adhere to Protect Layer I,II and it provide smoothness and finesse

Continuity



- Protective Layer I, II
- Protect Layer III

Losing Protective Layer by many different primary factors, HOME CLINIC line up try to persist Protective Layer

6 different types of Plant extract which contains in HAIR RESCUE PLATINUM HOME CLINIC SHAMPOO gives well moist to hair Less frictional and smoothing shampoo provide minimized exfoliation of Protective Layer

Once in two days, using HAIR RESCUE PLATINUM HOME CLINIC ESSENCE instead of daily using conditioner, permeate Protective Layer components

*Better to use for heavy damaged air for strong Protective layer effect

HAIR RESCUE PLATINUM HOME CLINIC line up is the support item of Salon Professional operation for client's home care

PROCESS

Pre-Shampoo

Well Towel Dry



“Apply HAIR RESCUE PLATINUM 0”
Rub into Color Damaged & Heat Damaged part
Well combing



“Apply HAIR RESCUE PLATINUM 1”
Rub into application point of 0 & Damaged part
Softly well Combing



“Apply HAIR RESCUE PLATINUM 1 or 1A”
Rub into Damaged part and well combing



► Attention 1

Applying “0”→“1”, if using deficiency of “1”,
White Grain could appear
Appearing the Grain, add more “1”
and Rub into application point until disappear

Plain Rinse
& Well Towel Dry

Rinse with water (Hot or Cold)
After well rinse off, well towel dry



“Apply HAIR RESCUE PLATINUM 2”
Rub into application point of “1”, “1A” and well combing

► Attention 2

Plain Rinsing after Applying “0”→“1”,
might feel coarse touch
Comb well softly and rinse well
This coarse touch
is not from hair damage,
from operation step system
“HAIR RESCUE PLATINUM 0,1”
is not contained smoothness component



“Apply HAIR RESCUE PLATINUM 3”
Rub into application point of “2” and well combing

30 seconds Shampoo

30 seconds Shampoo
After Plain Rinse, 30 seconds soft touch Shampoo
for removing Surface Deposit
from Scalp and healthy hair

※Applying amount for medium length hair
0.53oz = 15g(Pomp bottle: 5 push)



To Persist Protective Layer with Home Care
HOME CLINIC line up helps to persist Protective Layer

Major Ingredients

Tryptophan: Amino Acid, One of hair component, Disappearing by intensive heating operation

Sodium Acetylated Hyaluronate: Water-holding capacity twice as much as Hyaluronis Acid, Keep moist inside hair, Protect from dryness

Squalane: One of the components of skin moisturizer from olive, Provide Smoothing fineness to damaged and dry hair by component permeation
Camellia Oleifera Seed Oil: Family of Camellia seed oil, 30% of fruit component is oil This oil provide smoothing fineness

Diglycosyl Gallic Acid: Hair damage repair component made from Natural Polyphenol and 2 different Glucose Permeates
and stay in Cortex hollow to provide softness

9 Different Types of Amino Acid: Important hair component Amino Acids Glycine, Glutamic Acid, Arginine, Aspartic Acid, Serine, Proline, Threonine, Alanine, Lysine

Glycosphingolipids: Extraction from rice, Provide strength of Cortex and Cuticle